

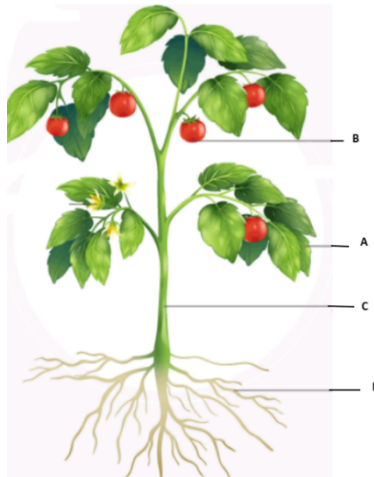


# ISO SCIENCE OLYMPIAD

## Sample Paper

Basic : (3 Points)

1. Which labelled part is found only in adult plants and not in young plants?



- (A) A                      (B) B                      (C) C                      (D) D
2. What is the function of a tail in fishes?  
(A) It helps the fish to move in water                      (B) It helps the fish to breath in water  
(C) It helps the fish to change direction in water                      (D) It helps the fish to stay upright
3. Which of these birds make a nest on the ground from pebbles and stones?  
(A) Eagle                      (B) Hen                      (C) Penguin                      (D) Crow
4. Which of the following statement is correct?  
(A) The body systems work together to form the human body  
(B) Heart, lungs and bones form the muscular system  
(C) Brain, nerves and spinal cord form the circulatory system  
(D) Nose, windpipe and lungs form the digestive system
5. Which of the plants is used to cure itching and insects' bites?  
(A) Tulsi                      (B) Isabgul                      (C) Neem                      (D) Cinchona

## Foundation: (4 Points)

6. Observe the figures shown below and answer the following questions:



A.



B.

What will you do to change water from fig. A to Fig. B?

- (A) Heating of water (B) Cooling of water  
(C) First heat then will cool the water (D) None of them

7. Why can we see the objects in a room?

- (A) They reflect light that falls on them  
(B) The things give off light to the air  
(C) The objects send light away from our eyes  
(D) None of them

8. In this diagram two boys are using the same amount of force to push the box. What will happen to the box?



- (A) The box will move to the left  
(B) The box will move to the right  
(C) The box will move left and then right  
(D) The box will not move at all

9. Man went to the moon for the first time in a spacecraft called \_\_\_\_\_.

- (A) Apollo 9 (B) Apollo 11 (C) Sputnik 2 (D) Sputnik 1

10. Identify the leaf of hibiscus plant.



(A)



(B)



(C)



(D)

## Exploration: (5 Points)

11. Observe the figures shown below and answer the following question.



P



Q

What is the importance of the things shown in the above figures (P and Q)?

- (A) Both are used as fuel (B) Both are used for cooking  
 (C) Both (A) and (B) (D) None of the above
12. "I am a natural resource that is hidden deep under the earth. I am also present in your food." Guess who am I?  
 (A) Minerals (B) Soil (C) Rock (D) Water

13. How does an earthworm breathe in the soil?



- (A) It breathes the air present in soil (B) It does not breathe  
 (C) It stores outside air then breathes in the soil (D) None of them
14. What does the instrument shown in the figure (box X) produce?

- (A) Soft sound (B) Pleasant sound  
 (C) Noise (D) All of the above



15. The given figure resembles \_\_\_\_\_.



- (A) Solar Eclipse (B) Lunar Eclipse (C) Eclipse (D) Both (A) and (B)



## ANSWER KEY

1-B	2-A	3-C	4-A	5-B	6-B	7-A
8-D	9-B	10-B	11-C	12-A	13-A	14-D
15-B						

Sample Paper